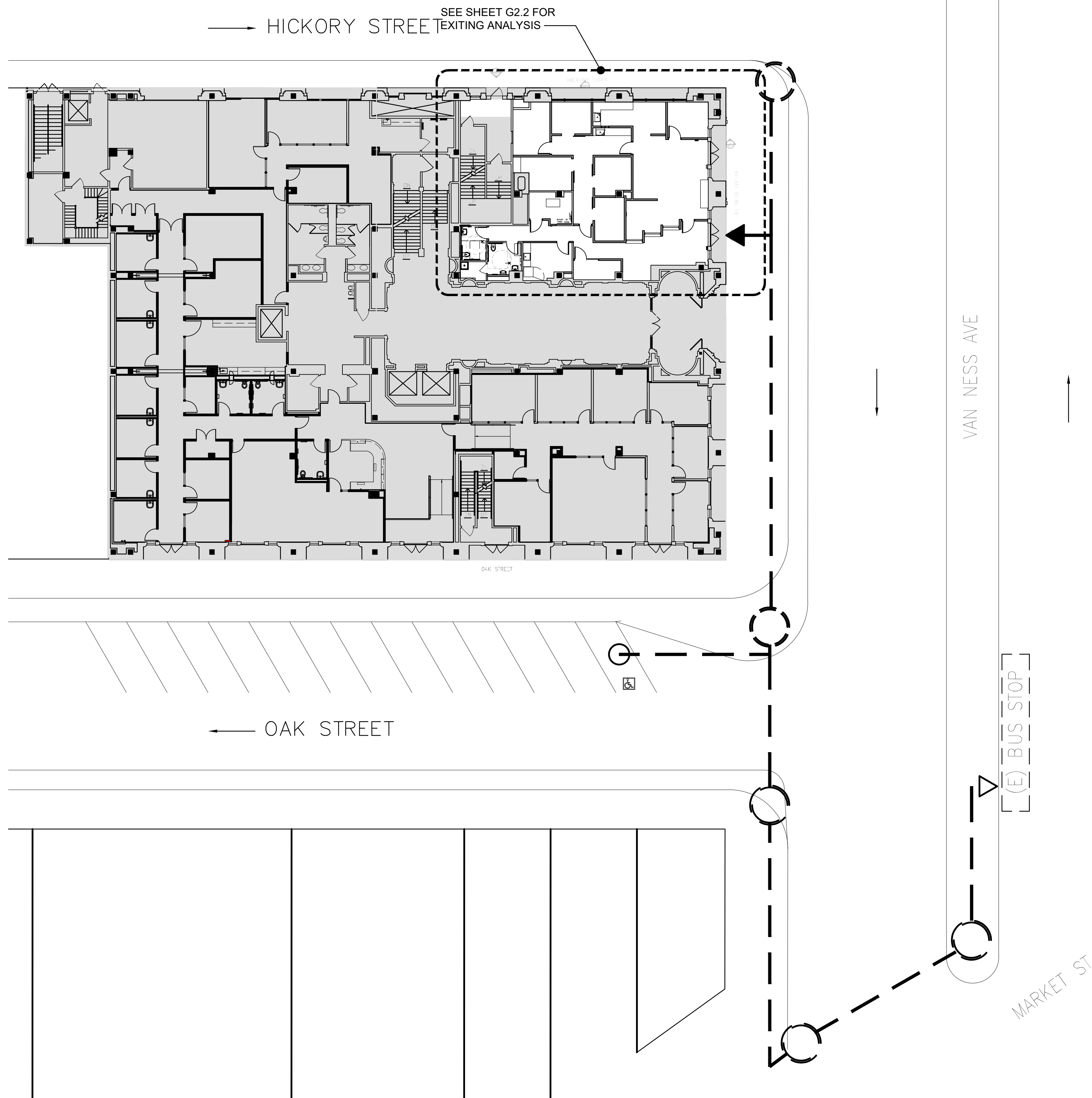
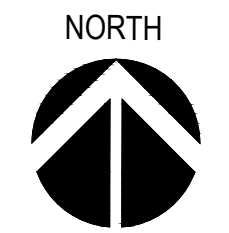


Original Drawing Size: 22" x 34" Drawing name: P:\PW\DPH\2001-AITC Travel Clinic\5.0\_Design\5.01\_Current\ACAD\Plot\G2.1 SITE PLAN.dwg Plotted on: Aug 18, 2023 - 3:41pm



**1** SITE PLAN  
SCALE: 1/16"=1'-0"



**LEGEND**

- AREA NOT IN CONTRACT
- EXISTING ACCESSIBLE ENTRANCE TO 27 VAN NESS
- EXISTING ACCESSIBLE START POINT (TRANSIT STOP)
- EXISTING ACCESSIBLE PATH
- EXISTING ACCESSIBLE CURB CUT
- EXISTING BLUE CURB PARKING ZONE



Ronald Alameida - Project City Architect  
 Julia Laue - Principle Architect / Division Manager  
 49 South Van Ness Ave., Suite 1100, San Francisco, CA 94103  
 Phone (628)271-2865

Project  
**AITC IMMUNIZATION & TRAVEL CLINIC RELOCATION**  
 27 VAN NESS AVE., SUITE 110  
 SAN FRANCISCO, CA 94102

Consultant



BID SET 5/19/23

No.	Date	Revisions

PM \_\_\_\_\_ DK  
 PA \_\_\_\_\_ DK  
 Drawn JC, YW,MM,ADG  
 Checked \_\_\_\_\_



Drawing Title

**SITE PLAN**

Sheet No. **G2.1**

Scale: \_\_\_\_\_

Project No. PW-DPH-2001-AITC Travel Clinic



Ronald Alameida - Project City Architect  
 Julia Laue - Principle Architect / Division Manager  
 49 South Van Ness Ave., Suite 1100, San Francisco, CA 94103  
 Phone (628)271-2865

Project  
**AITC IMMUNIZATION & TRAVEL CLINIC RELOCATION**

27 VAN NESS AVE., SUITE 110  
 SAN FRANCISCO, CA 94102

Consultant

**GENERAL NOTES**

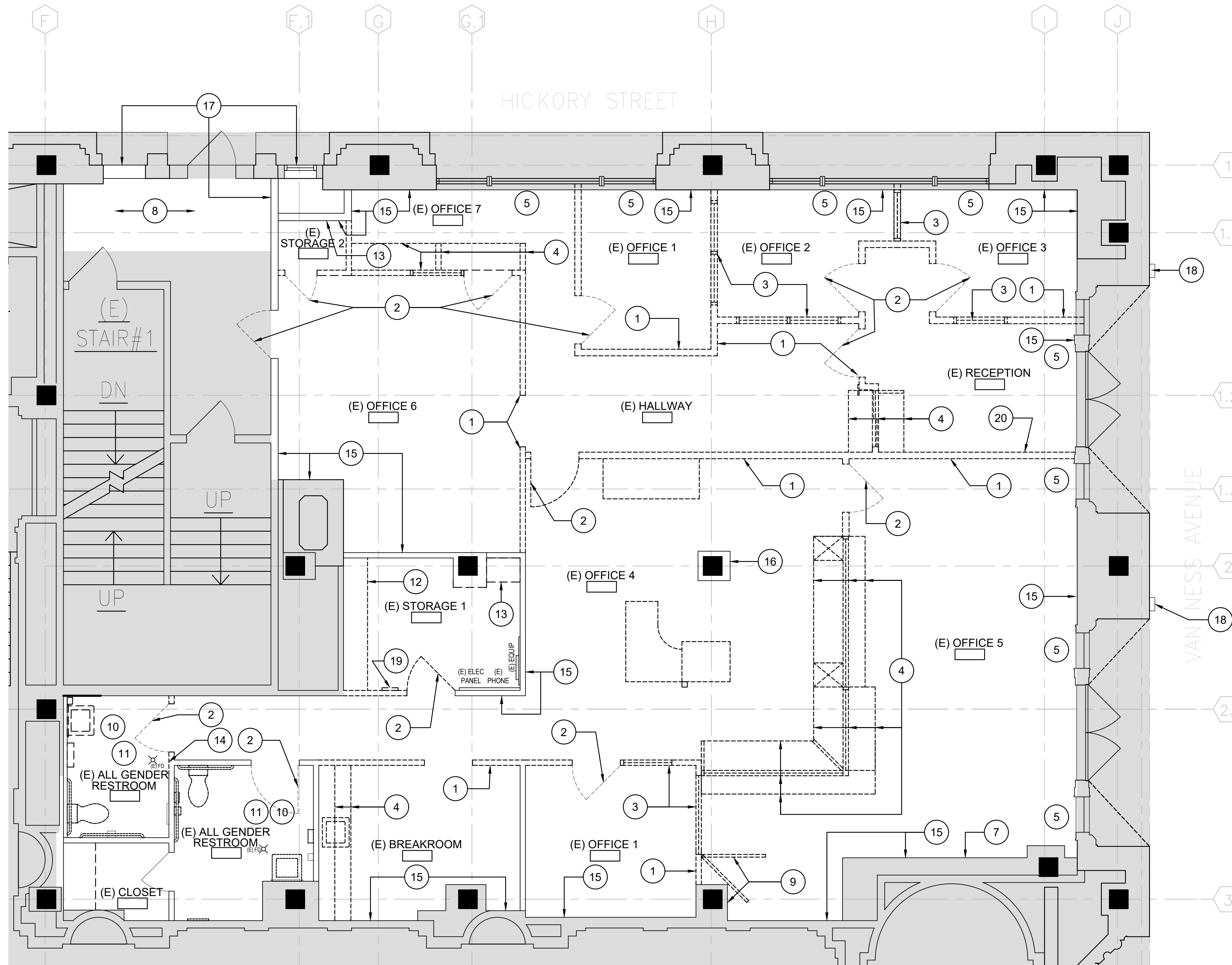
- DEMOLITION IS NOT LIMITED TO WHAT IS SHOWN ON THE DWGS. THE INTENT OF THE DWGS IS TO INDICATE THE GENERAL SCOPE OF WORK REQUIRED. PERFORM ALL DEMOLITION AND REMOVAL WORK REQUIRED, WHETHER INDICATED OR NOT.
- PROTECT FROM DAMAGE ALL MATERIALS, CONSTRUCTION, UTILITIES, AND OTHER ITEMS AND APPURTENANCES NOT SCHEDULED FOR DEMOLITION.
- REMOVE ALL PLUMBING FIXTURES AND LINES U.O.N. SEE PLUMBING DWGS.
- REMOVE ALL SURFACE MTD ELECTRICAL OUTLETS AND CONDUITS NOT TO BE USED U.O.N. SEE ELEC DWGS.
- REMOVE, PRESERVE, AND STORE (E) ITEMS TO BE REINSTALLED AT THE SAME LOCATION OR RELOCATED. ALL SUCH ITEMS NOT REUSED BECOME THE PROPERTY OF THE CONTRACTOR AND SHALL BE REMOVED FROM THE JOB SITE.
- KEEP CONSTRUCTION AREA BROOM CLEAN. CLEAN ALL DUST, DIRT, AND DEBRIS CAUSED BY DEMOLITION OPERATIONS.
- SEE MECHANICAL, ELECTRICAL, PLUMBING, AND FIRE PROTECTION DWGS FOR ADDITIONAL DEMOLITION.
- CONTRACTOR SHALL COORDINATE FLOOR SLAB PENETRATIONS AND FIRE STOPS WHERE REQUIRED, TYP.
- REMOVE (E) FLOORING, BASE & SUBSTRATE DOWN TO CONCRETE BASE FOR AREAS OF WORK UON, TYP.

**SHEET NOTES**

- REMOVE (E) PARTITIONS / WINDOWS / OPNG & FRAME
- REMOVE (E) DOOR / FRAME / THRESHOLD
- REMOVE (E) WINDOW & FRAME
- REMOVE (E) HIGH / LOW COUNTER, WINDOW, & CASEWORK
- REMOVE (E) WINDOW SHADES / BLINDS
- REMOVE (E) WALL MTD SIGNAGE
- REMOVE (E) WALL MTD DIGITAL DISPLAY
- PROTECT (E) FLOORING AND BASE TO REMAIN
- REMOVE (E) PARTITION AND ADJACENT WALL MOUNTED PLATE
- REMOVE (E) TOILET, LAVATORY, GRAB BARS, TOILET PAPER DISPENSER, PAPER TOWEL DISPENSER, SOAP DISPENSER, SANITARY NAPKIN DISPOSAL UNIT
- REMOVE & SALVAGE (E) MIRROR, SEAT COVER DISPENSER
- REMOVE (E) WALL MOUNTED SHELVING SYSTEM
- REMOVE (E) DATA / PORT RACK & RELATED ACCESSORIES, SED
- REMOVE PARTIAL (E) WALL AND FRAME
- REMOVE (E) WALL BASE, TYP.
- REMOVE (E) WALL CLOCK AND SECURITY CAMERA AND WIRING, SED
- REMOVE PARTIAL WALL FOR NEW LOUVERS, SMD, SEE DETAIL 2/A9.8.
- (E) AUTOMATIC DOOR ACTUATOR PANEL TO REMAIN
- (E) SECURITY KEYPAD TO BE SALVAGED & RELOCATED. PROTECT AND STORE AS REQUIRED PRIOR TO REINSTALLATION.
- REMOVE & RELOCATE (E) AUTOMATIC OPERATOR WALL-RECESSED KEYSWITCH

**LEGEND**

AREA NOT IN CONTRACT



FOR DBI USE ONLY

BID SET 5/19/23

No.	Date	Revisions

PM \_\_\_\_\_ DK \_\_\_\_\_  
 PA \_\_\_\_\_ DK \_\_\_\_\_  
 Drawn JC, YW, MY, CW  
 Checked \_\_\_\_\_  
 Drawing Title \_\_\_\_\_

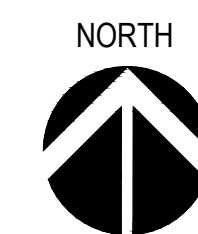


DEMOLITION FLOOR PLAN

Sheet No. **A1.1**

Scale: \_\_\_\_\_  
 Project No. PW-DPH-2001-AITC Travel Clinic

**1 DEMOLITION FLOOR PLAN**  
 SCALE: 1/4"=1'-0"





Ronald Alameida - Project City Architect  
Julia Laue - Principle Architect / Division Manager  
49 South Van Ness Ave., Suite 1100, San Francisco, CA 94103  
Phone (628)271-2865

Project  
**AITC IMMUNIZATION & TRAVEL CLINIC RELOCATION**  
27 VAN NESS AVE., SUITE 110  
SAN FRANCISCO, CA 94102

Consultant

### GENERAL NOTES

1. ALL DIMENSIONS ARE FINISH FACE TO FINISH FACE, UON.
2. VERIFY FOR ALL DOORS THAT LEVEL LANDING WITH MAXIMUM 1.5% SLOPE TO MATCH REQUIRED MANEUVERING CLEARANCES PER THE GENERAL DRAWINGS IS PROVIDED. MANEUVERING CLEARANCES MUST BE FREE OF PROTRUSIONS FOR THE FULL HEIGHT OF DOOR, TYP. SEE GENERAL SHEET G3.3.
3. PROVIDE & INSTALL CORNER GUARDS FOR EXPOSED INTERIOR GYPSUM BOARD OUTSIDE CORNERS, TYP.

### SHEET NOTES

1. (E) ACCESSIBLE DOOR ACTUATOR PANEL TO REMAIN
2. RELOCATE (E) ACCESSIBLE DOOR ACTUATOR AND PROVIDE FOR NEW WIRING FOR OPERATION. SEE 11/G3.3 FOR MOUNTING HEIGHT STANDARD. SED.
3. PROVIDE & INSTALL (N) IT EQUIPMENT RACK, SED.
4. RELOCATE & REINSTALL (E) SECURITY KEYPAD INCLUDING ALL CONNECTIONS TO NEW LOCATION. PROVIDE WALL-MOUNTED INSTALLATION AT 48" MAX AFF TO TOP OF KEYPAD.
5. PROVIDE & INSTALL (N) EXTERIOR LOUVERS, SMD AND SEE DETAIL 9 & 12/A9.8.
6. PROVIDE & INSTALL (N) CARD READER LOCATION FOR (E) DOOR. CONTRACTOR SHALL COORDINATE OPERATION WITH DOOR HARDWARE & AUTOMATIC OPERATOR, SED.
7. PROVIDE & INSTALL (N) CALL BOX WITH CARD READER FOR (E) DOOR. CONTRACTOR SHALL COORDINATE OPERATION WITH DOOR HARDWARE & AUTOMATIC OPERATOR, SED & DETAIL 1/A9.8
8. PATCH AND REPAIR WALL AS REQUIRED TO MATCH (E) CONSTRUCTION. SEE FINISH SCHEDULE FOR NEW FINISH, TYP.
9. PROVIDE & INSTALL EMERGENCY POWER OFF WITH WALL-MOUNTED BUTTON AT 48" MAX TO TOP OF DEVICE, SED
10. PROVIDE & INSTALL WALL-MOUNTED SECURITY CAMERA
11. PROVIDE & INSTALL SUPPORT WALL FOR LAB UPS CABINETS. PROVIDE STRUCTURAL BACKING PER UPS MANUFACTURER GUIDELINES & INSTALL WALL-MOUNTED UPS UNITS. PROVIDE & INSTALL UPS SYSTEM AND COMPONENTS INCLUDING ALL CONNECTIONS FOR OPERATION AND TO THE LAB FRIDGES/FREEZERS. MAINTAIN CLEAR ACCESS ROUTE TO LAB AND ACCESS CLEARANCES FOR THE UPS SYSTEM CABINETS.
12. PROVIDE & INSTALL GYPSUM BOARD AT REMOVED PARTITION. PATCH, REPAIR & FINISH AS SCHEDULED.
13. REMOVE (E) BASE, INSTALL NEW TO MATCH (E).
14. RELOCATE & REINSTALL (E) AUTOMATIC OPERATOR KEYSWITCH INCLUDING ALL CONNECTIONS. PROVIDE WALL-RECESSED INSTALLATION AT 48" MAX TO TOP OF DEVICE

### LEGEND

- AREA NOT IN CONTRACT
- WALL TYPE TAG, SEE SHEET A9.1
- WINDOW TAG, SEE WINDOW TYPES, ON SHEET A10.2
- CORNER GUARD, SEE DETAIL 1/A9.3
- WALL FINISH, SEE A10.2 FOR DETAIL
- DOOR TAG, SEE A10.2 FOR DOOR SCHEDULE
- CARD READER, SEE A10.2 FOR DOOR SCHEDULE & ELECTRICAL DRAWINGS

FOR DBI USE ONLY

BID SET 5/19/23

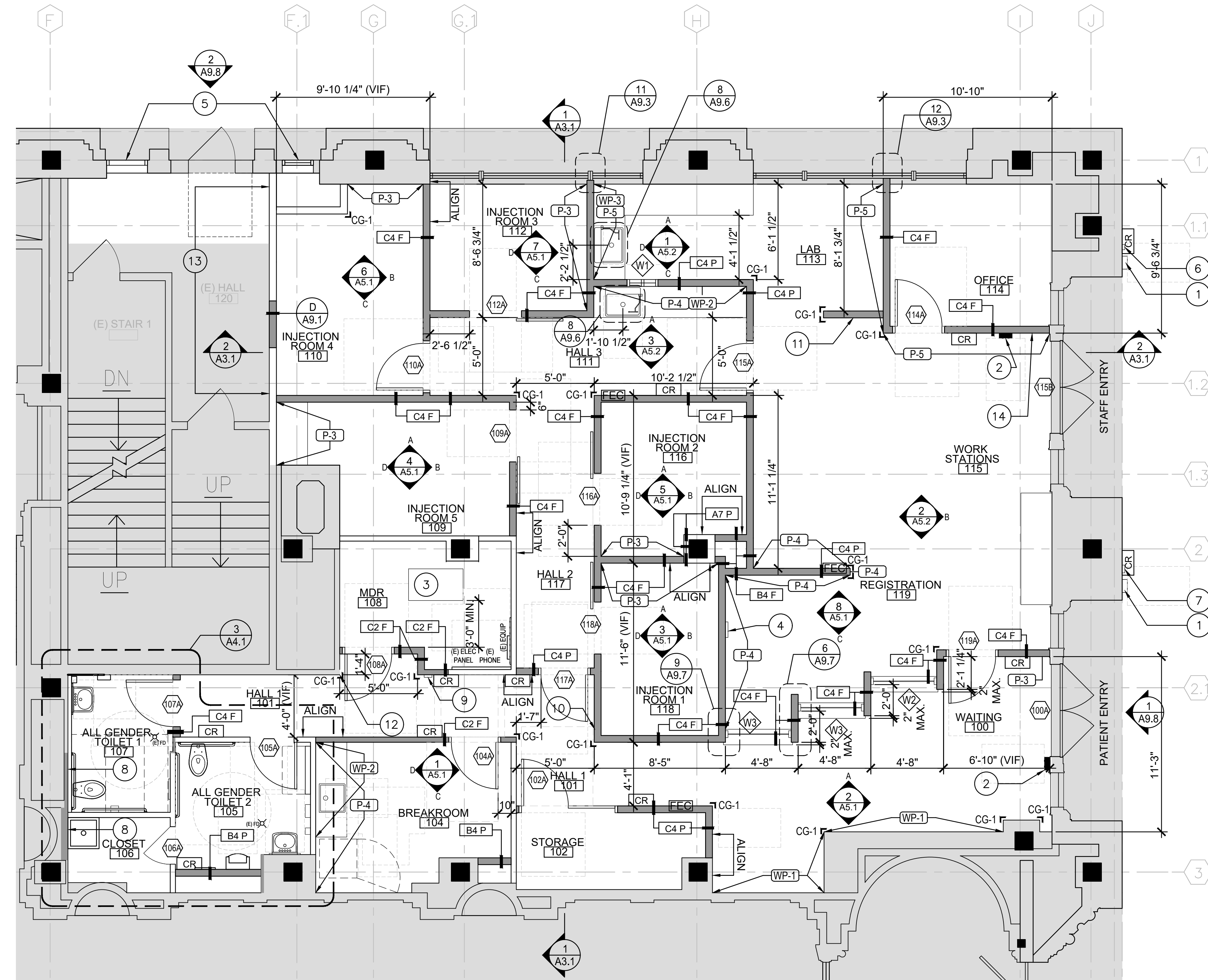
No.	Date	Revisions

PM \_\_\_\_\_ DK \_\_\_\_\_  
 PA \_\_\_\_\_ DK \_\_\_\_\_  
 Drawn JC, YW, MY, CW  
 Checked \_\_\_\_\_  
 Drawing Title \_\_\_\_\_



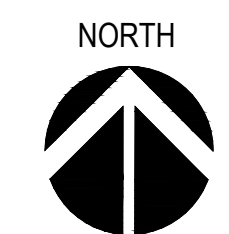
### FLOOR PLAN - NEW WORK

Sheet No. **A2.1**  
 Scale: \_\_\_\_\_  
 Project No. PW-DPH-2001-AITC Travel Clinic



### 1 FLOOR PLAN

SCALE: 1/4"=1'-0"



Original Drawing Size: 22" x 34" Drawing name: P:\PW\DPH\2001-AITC Travel Clinic\5\_0\_Design\5\_01\_Current\ACAD\Plot\A2.1 - FLOOR PLAN.dwg Plotted on: Aug 18, 2023 - 4:13pm